



## RUSTIC

EXTERIOR DESIGN



## TRADITIONAL

EXTERIOR DESIGN



## FOLK VICTORIAN

EXTERIOR DESIGN



## GERMAN COTTAGE

EXTERIOR DESIGN

# THE NORMAN

*Classic Collection*



## MODERN FARMHOUSE

EXTERIOR DESIGN

~2,805 SQ FT

~3,540 SQ FT W/ BASEMENT

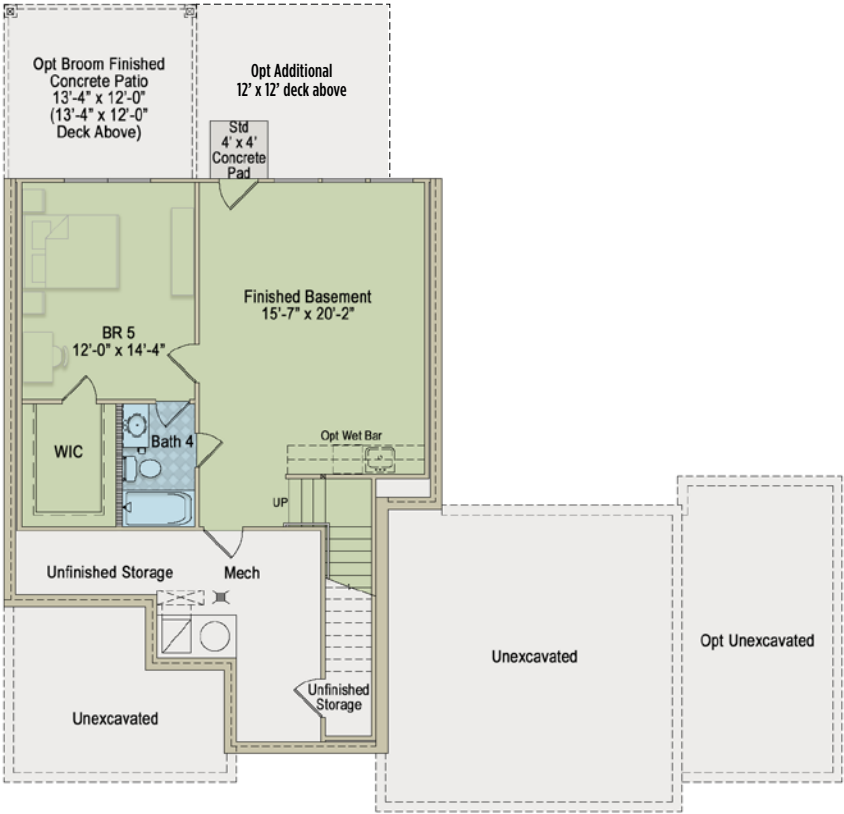
Additional exterior designs are available. See back panel for more information



AUTUMNWOOD

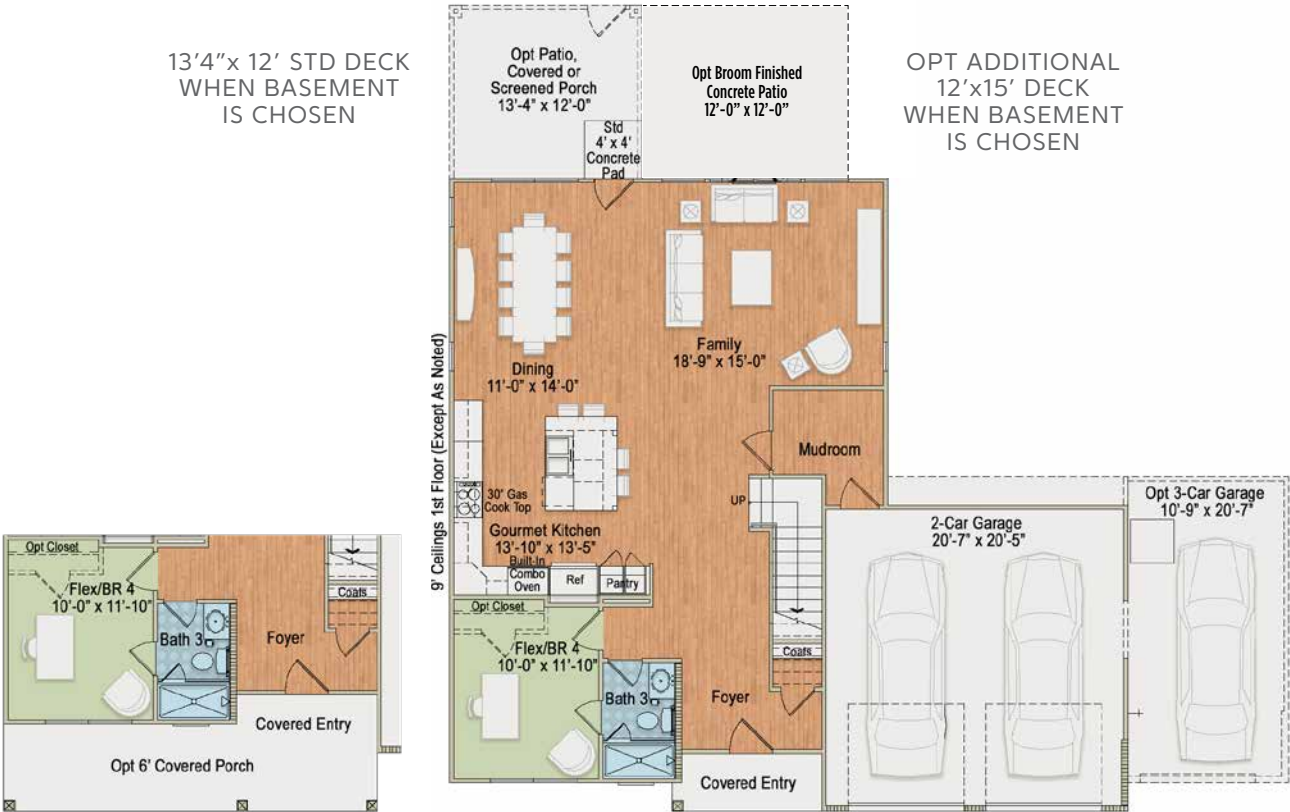
For more information  
call 919-249-7008 or visit  
[AutumnwoodNewHomes.com](https://AutumnwoodNewHomes.com)





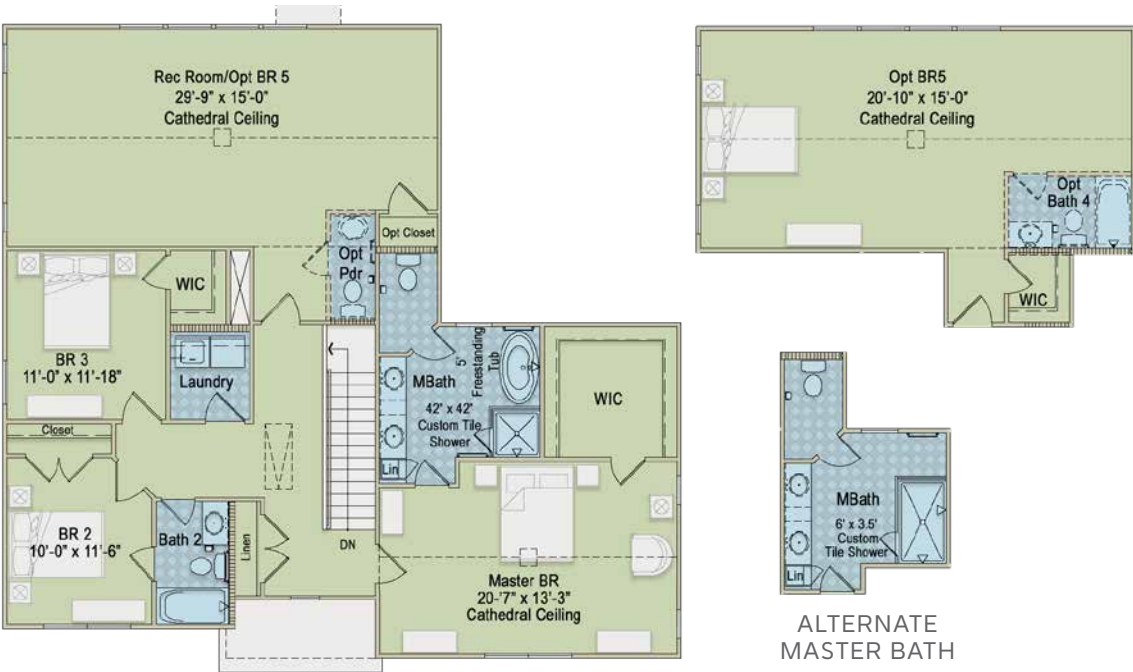
BASEMENT ~735 SQUARE FEET

BASEMENT OPTION



BASE FLOOR PLAN 1<sup>ST</sup> FLOOR ~2,805 SQUARE FEET  
W/ BASEMENT ~3,540 SQUARE FEET

BASE OPTION



2<sup>ND</sup> FLOOR ~2,805 SQUARE FEET  
W/ BASEMENT ~3,540 SQUARE FEET

SECOND FLOOR OPTIONS







**RUSTIC**  
EXTERIOR DESIGN



**TRADITIONAL**  
EXTERIOR DESIGN



**FOLK VICTORIAN**  
EXTERIOR DESIGN



**MODERN  
FARMHOUSE**  
EXTERIOR DESIGN

# THE NORMAN PLUS

*Classic Collection*



## GERMAN COTTAGE

EXTERIOR DESIGN

~3,171 SQ FT

~4,063 SQ FT W/ BASEMENT

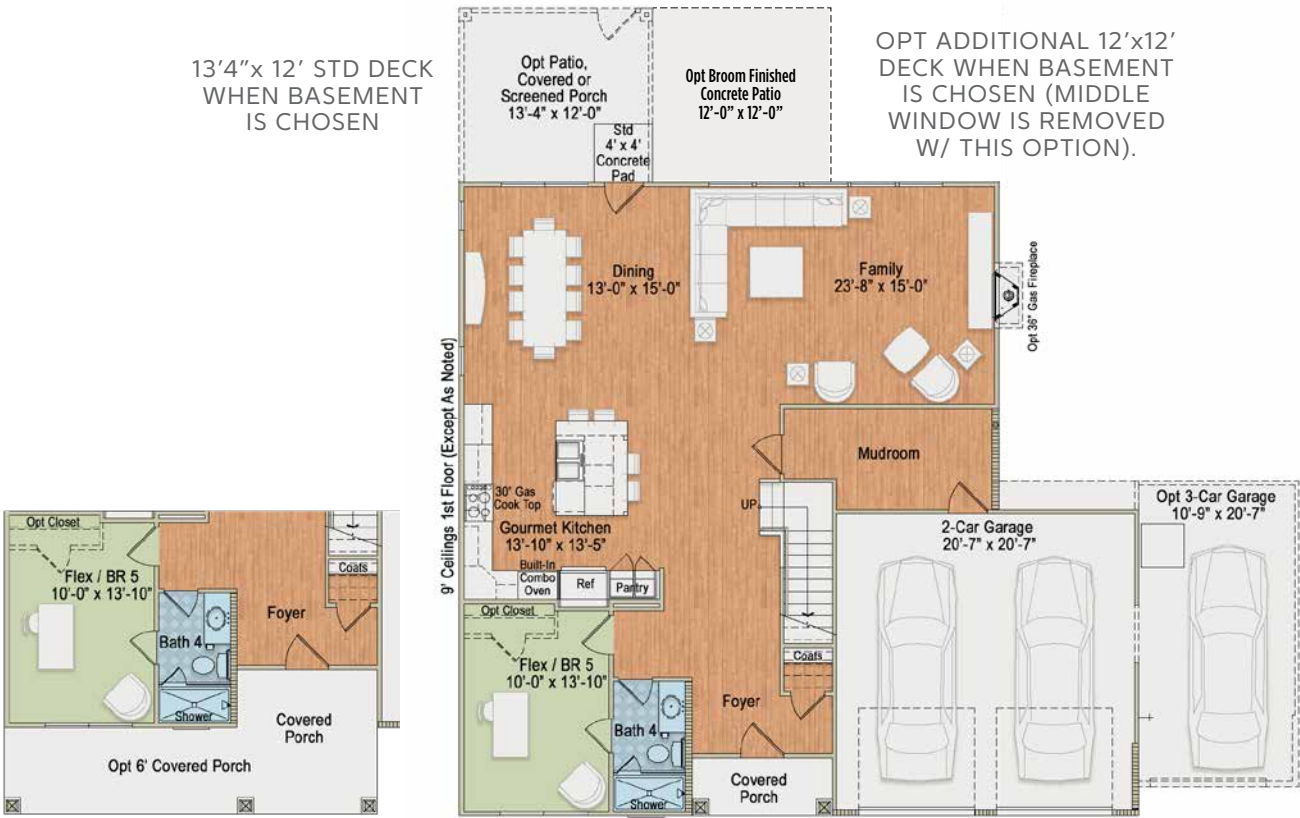
Additional exterior designs are available. See back panel for more information



**AUTUMNWOOD**

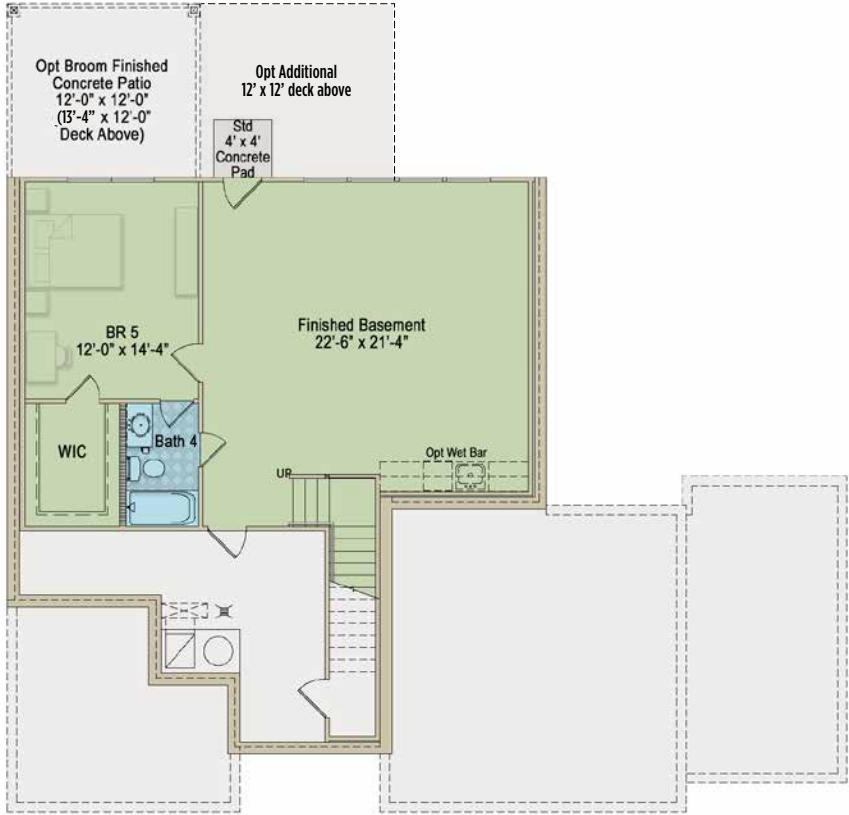
For more information  
call 919-249-7008 or visit  
[AutumnwoodNewHomes.com](https://www.AutumnwoodNewHomes.com)





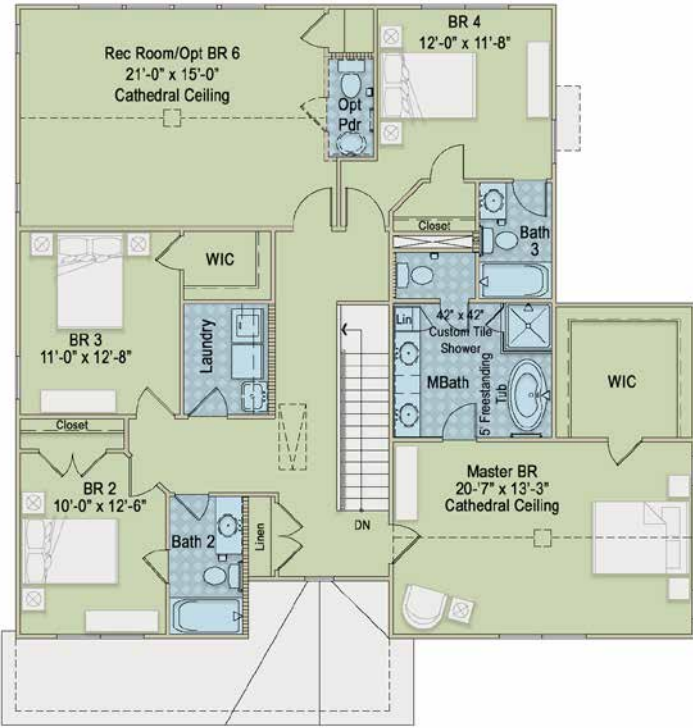
1<sup>ST</sup> FLOOR: ~3,171 SQUARE FEET  
W/ BASEMENT ~4,063 SQUARE FEET

NORMAN PLUS FIRST FLOOR



BASEMENT OPTION ~892 SQUARE FEET

BASEMENT OPTION



2<sup>ND</sup> FLOOR ~3,171 SQUARE FEET

SECOND FLOOR OPTION



ALTERNATE  
MASTER BATH

